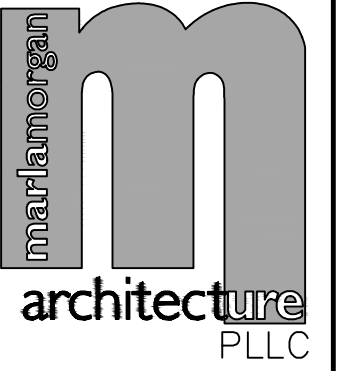


PLAN NOTES:

- 1 MOUNT UNIT HEATER AT 10'-0" AFF TO BOTTOM OF UNIT.
- 2 COVER EXPOSED REFRIGERANT PIPING WITH SHEET METAL COVER AS PER DETAIL ON SHEET M-3.
- 3 RISE UNIT HEATER CONCENTRIC FLUES UP THRU ROOF TO VERTICAL VENT TERMINATION ASSEMBLY. SIZE AND MATERIAL OF FLUES TO BE ACCORDING TO MFG. INSTRUCTIONS. SEE DETAIL ON SHEET M-4.
- 4 RUN UNIT HEATER CONCENTRIC FLUES THRU EXTERIOR WALL TO HORIZONTAL VENT TERMINATION ASSEMBLY. SIZE AND MATERIAL OF FLUES TO BE ACCORDING TO MFG. INSTRUCTIONS. SEE DETAIL ON SHEET M-3.
- 5 RISE REFR. PIPING UP IN STUD SPACE OF EXTERIOR WALL TO ABOVE CEILING OF OFFICE AREA AND RUN TO MECH. ROOM AND CONNECT TO DX COOLING COIL AS SHOWN. SEE DETAIL ON SHEET M-3 FOR PIPE SUPPORT.
- 6 RUN 6"Ø OUTSIDE AIR DUCT AS HIGH AS POSSIBLE TO ROOF CAP LOCATED ON ON ROOF ABOVE. SEAL ROOF PENETRATION WEATHERTIGHT. MAINTAIN 10'-0" CLEARANCE FROM ROOF CAP TO ALL EXHAUST, FLUES AND PLUMBING VENTS ON ROOF.

LICENSED ARCHITECT
AR-2650
MARLA R. MORGAN
STATE OF IDAHO



MARLA MORGAN, Architect
PH: 208.270.2244
F-MAIL: morgnrmr@cobleone.net

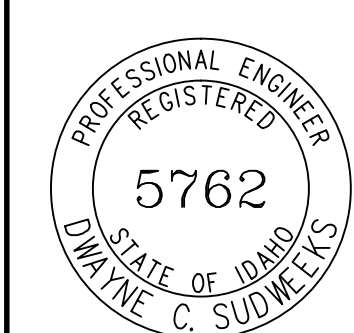
OWNER: HEYREND PROPERTIES, LLC
New Warehouse Building
Location: Heyrend Way Idaho Falls, Idaho 83402

SHEET CONTENTS
TENANTS 4, 5 & 6
MECHANICAL FLOOR PLAN

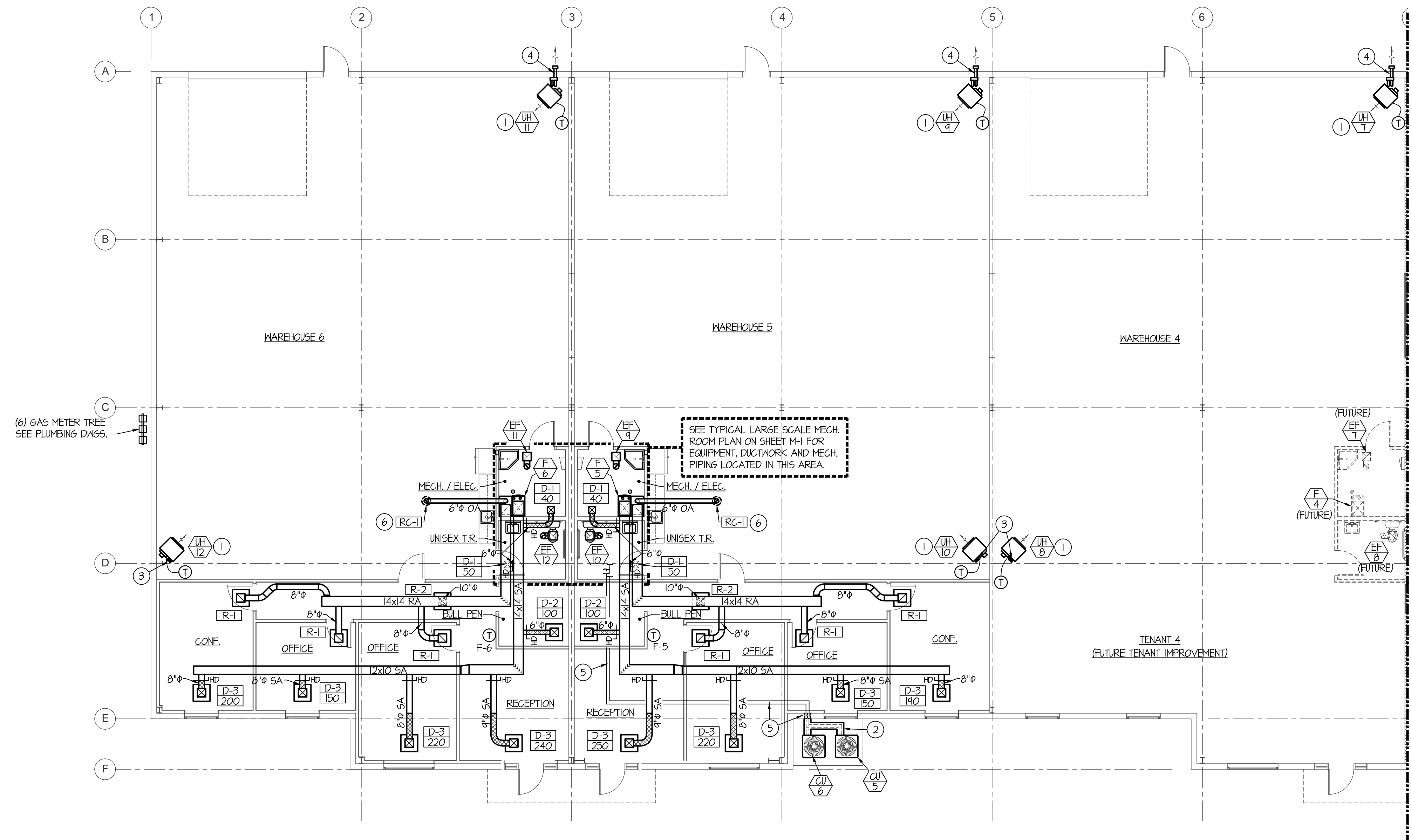
REVISIONS	DATE	DESCRIPTION

SHEET NUMBER
M-2 OF 4

ORIGINAL DRAWING SIGNED BY: DWAYNE C. SUDWEEKS
DATE ORIGINAL SIGNED: JULY 19, 2019
ORIGINAL ON FILE AT ENGINEERED SYSTEMS ASSOCIATES
1355 EAST CENTER, POCATELLO, IDAHO 83201



Engineered Systems Associates
1355 EAST CENTER
POCATELLO, IDAHO 83201
PHONE: (208) 233-0501
FAX: (208) 233-0529
EMAIL: esa@engsystems.com
ESA JOB NUMBER: 19032



**TENANTS 4, 5 & 6
MECHANICAL FLOOR PLAN**
SCALE: 1/8" = 1'-0"
NORTH